



KOBOT K1 and K2 STILLAGE USER MANUAL

Features:

Flexible, 4 sides Foldable , Collapsible and with 2 Gates removal. 4-way lifting access, stackable and with drainage holes.

Size: K1 Model Mesh -Australian Standard 1165mm x1165mm x 970mm
Collapsed height : 330mm; Tare : 107 kg ; max. internal dimension between mesh : 1080mm
Internal max. load height - 780mm when stacking

K2 Model Mesh – Australian Standard 1165mm x 1165mm x 1150mm
Collapsed height : 400mm; Tare : 133 kg ; max. internal dimension between mesh : 1080mm
Internal max. height – 960mm when stacking

SWL : 1000kg

Max stackable units when loaded : 5 high, static flat

Max stackable units in collapsed state: 20 high, static flat

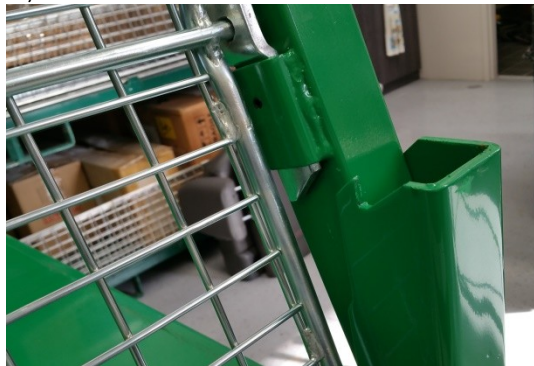
Max forking with load: 1 high from any side

Max forking when collapsed: 5 high from any side

Max in Trucking vehicle when loaded : 2 high

Max in truck in collapsed state: limited by truck height

Usage: Lift posts/gate upright and ensure locking catch is “latch-on”. Once the post is “latch on”, the post will not collapse, even when standing on its own. (compared to competitors)



Ensure all latches are hooked on all sides as below. Please keep hands and fingers clear of all moving parts upon assembly.



Safety Checks before usage of stillage:

- Pallet feet have not been damaged.
- Gates latches are working
- Posts have not been damaged.
- All gates are not damaged to prevent proper stacking.

Maintenance and repairs:

- There is minimum maintenance required as there are not bolts or nuts to be tighten.
- If parts of stillage have been damaged, please do not use the stillage.
- Please send stillage back to us to assess if repair can be made.

General good loading and lifting practices:

- Gates can be folded and removed for good lifting practices.
- Do not lift over the gate when lifting and loading onto base of stillage, please remove gate and walk in. See picture below. Please remember to bend your knees.



Loading onto Truck:

- Always try to even out the load on the stillage
- When stacking stillage, ensure interlock is engage correctly.
- Always put heavy loads at bottom of the stack when stacking.

Each stillage sold by Kobot Systems is in a safe usable condition. Please adhere to maximum SWL and safe stacking as outline. If you are not sure of the usage, please advise and we will arrange proper usage training as per first delivery. Please do not use damaged stillages.

Disclaimer:

The above serves as a guide. Kobot Systems Pty Ltd does not accept any liability arising from injury or damage caused arising out of the use of the stillage in anyway due to negligent act, breach of duty, default or omission or both, on the part of Kobot Systems Pty Ltd, its directors or employees or agents.